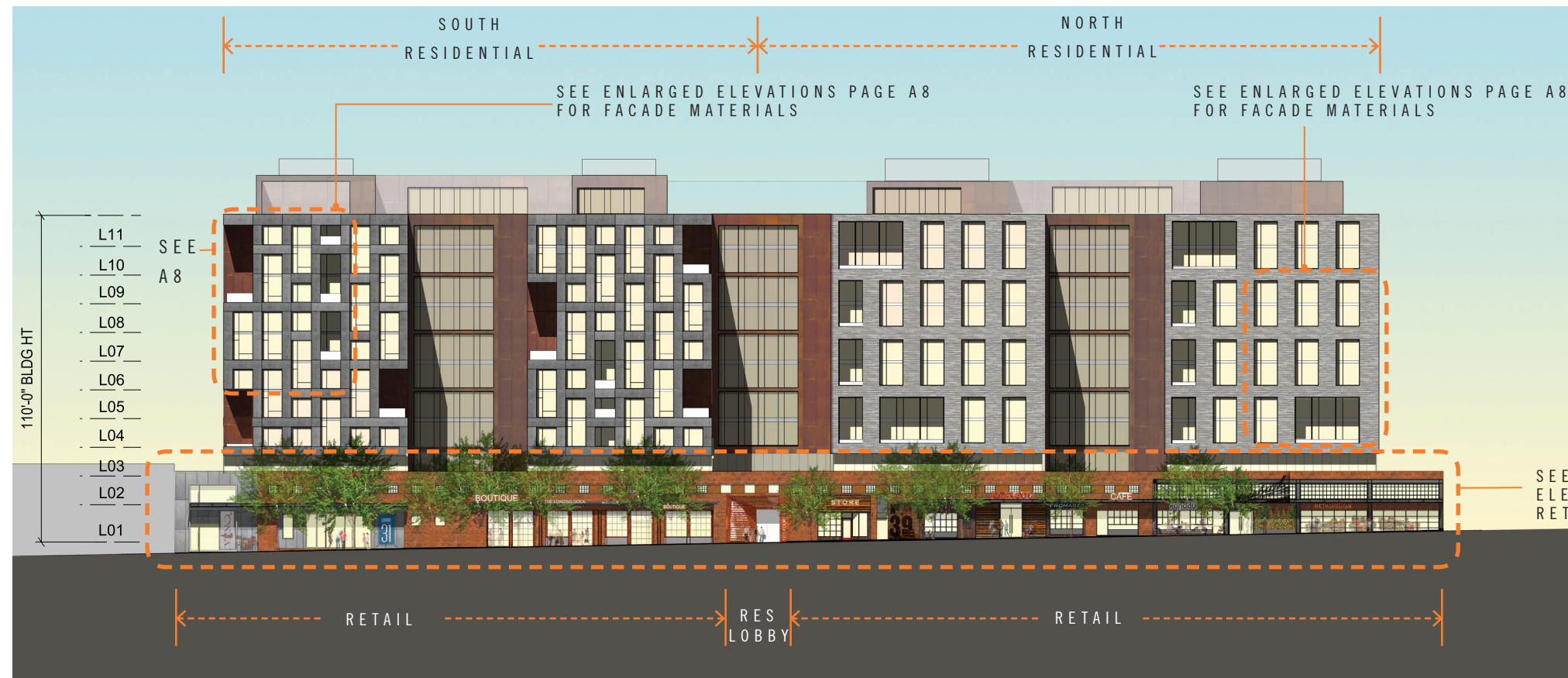
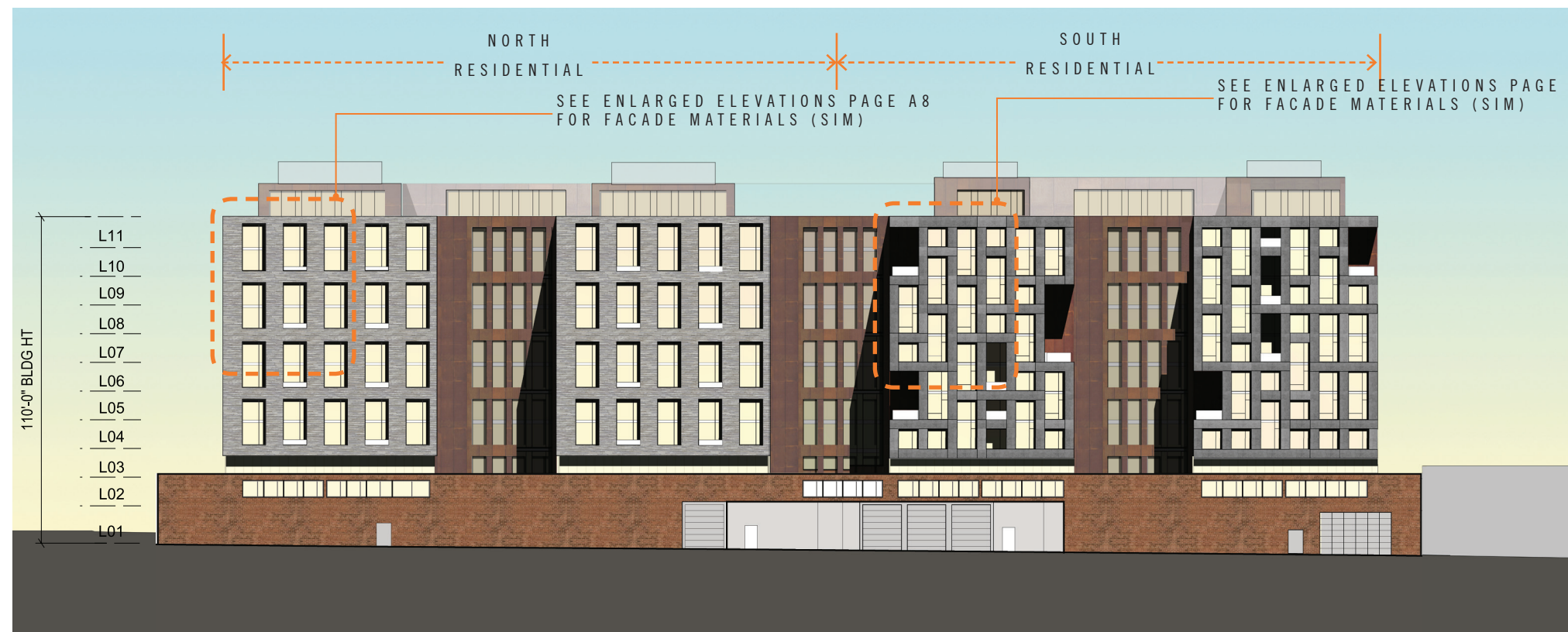


# EXHIBIT E1



A. EAST ELEVATION (4TH ST NE)



B. WEST ELEVATION (ALLEY)

**NOTES:**

1. REFER TO ROOF PLAN FOR OVERALL BUILDING DIMENSIONS.
2. THE EXTERIOR ELEVATIONS, INCLUDING DOOR AND WINDOW SIZES AND LOCATIONS, THE INTERIOR PARTITION LOCATIONS, THE NUMBER, SIZE, AND LOCATIONS OF RESIDENTIAL UNITS, OUTDOOR SPACE, STAIRS, BALCONY AND ELEVATORS ARE PRELIMINARY AND SHOWN FOR ILLUSTRATIVE PURPOSES ONLY. THE PARKING SPACE LAYOUT IS SHOWN FOR ILLUSTRATIVE PURPOSES ONLY. THE FINAL LAYOUTS MAY VARY.

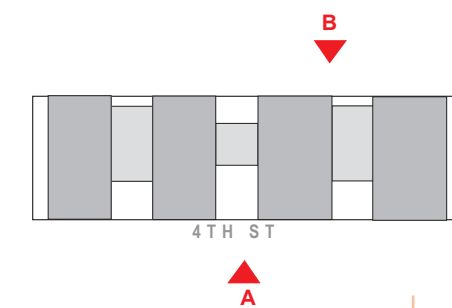
**MATERIAL DESCRIPTION**

SEE BUILDING MATERIALS SHEET A13

**MATERIAL LEGEND**

- M1** BRICK MASONRY BLEND
- M2** PRECAST CONCRETE PANEL
- M3** METAL AND/ OR GLASS RAILING SYSTEM
- M4** ARCHITECTURAL METAL PANEL
- M5** ALUMINUM/ GLASS WINDOW ASSEMBLY
- M6** ALUMINUM/ GLASS PAINTED STEEL STORE FRONT SYSTEM
- M7** MTL/ GLASS GARAGE DOOR

**KEY PLAN**



1270 4<sup>TH</sup> ST NE WASHINGTON, DC

PUD APPLICATION 2014 MAY 1  
SUPPLEMENTAL SUBMISSION 08/26/14

BUILDING ELEVATIONS  
DESIGNED TO OP REPORT ZC-14-13